



Interreg
North Sea Region
IMMERSE

European Regional Development Fund



EUROPEAN UNION

Round 2: Session 5 – Habitat Creation

Measure to reduce tidal intrusion and increase nature value
(Michael de Beukelaer-Dossche, DVW)





Round 2: Session 5

M8 Pilot on intertidal habitat creation (TRT)

M12 Execute measure to reduce tidal intrusion and increase nature value (DVW)

5. Habitat creation (TRT)





Estuary: Scheldt

Topic: Habitat Creation

Partner: DVW

Pressure:

Tidal
Amplification

Habitat loss



Execute
measure to
reduce tidal
intrusion
and increase
nature value



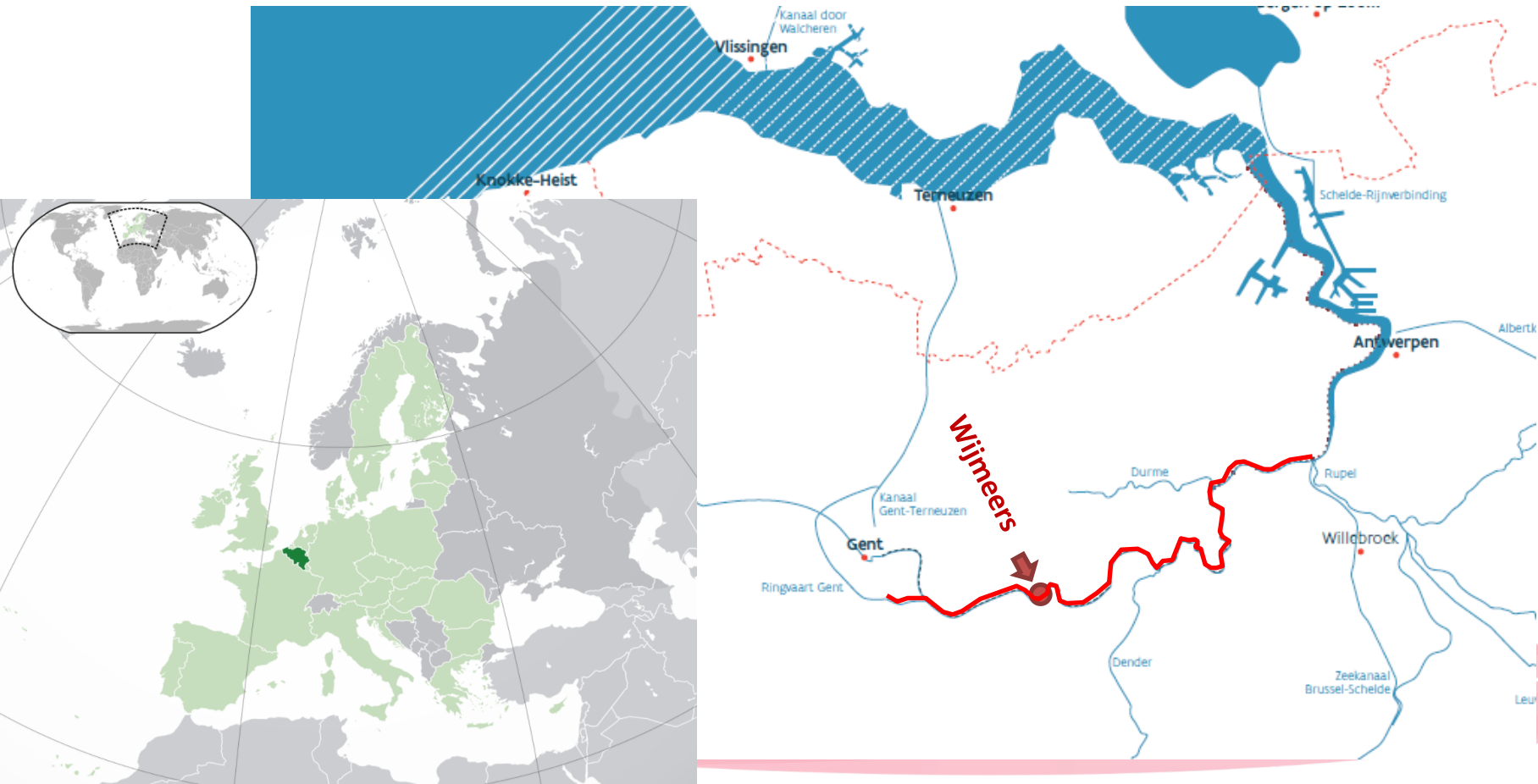
Benefit:

Supporting
habitat
creation



Preparation

Pilot – Wijmeers - Scheldt River – Flanders, Belgium

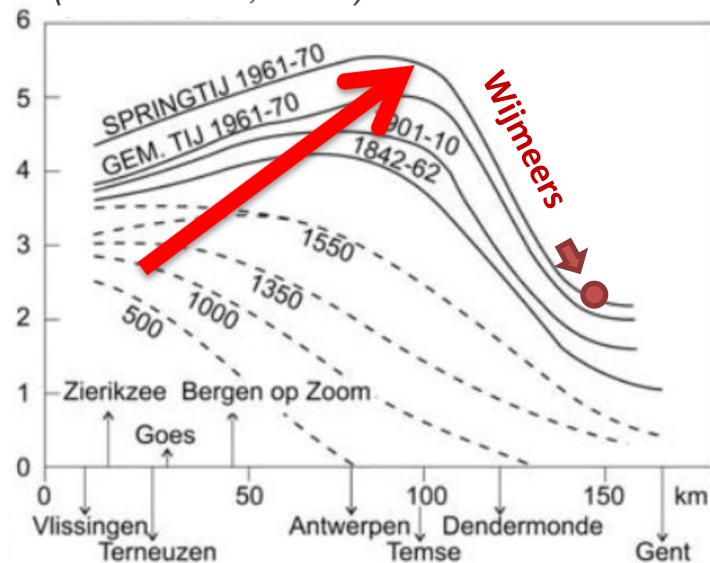


Pilot – Wijmeers - Challenges



Tidal range Schelde

(Coen et al., 1988)

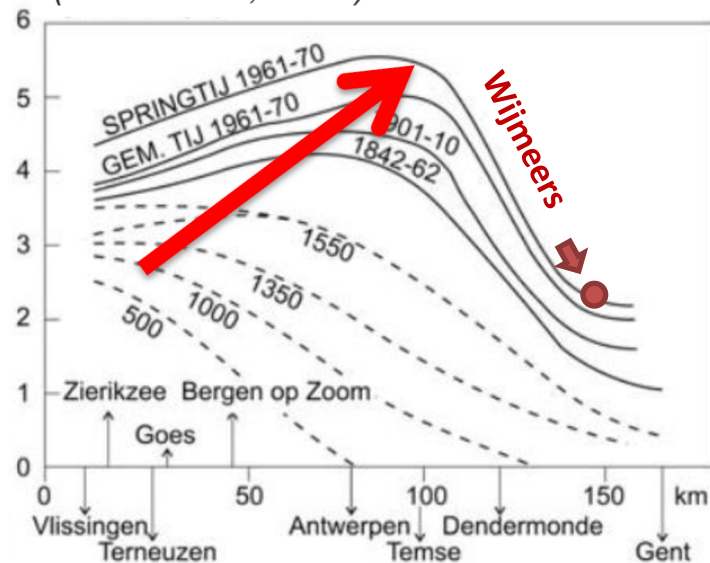


Pilot – Wijmeers - Challenges



Tidal range Schelde

(Coen et al., 1988)





Prehistory - 2015



2015 - 2019



Sweet water - Estuarine Nature
Fresh sediment deposition
Low dynamics
Midget infestation

2019 - 2020

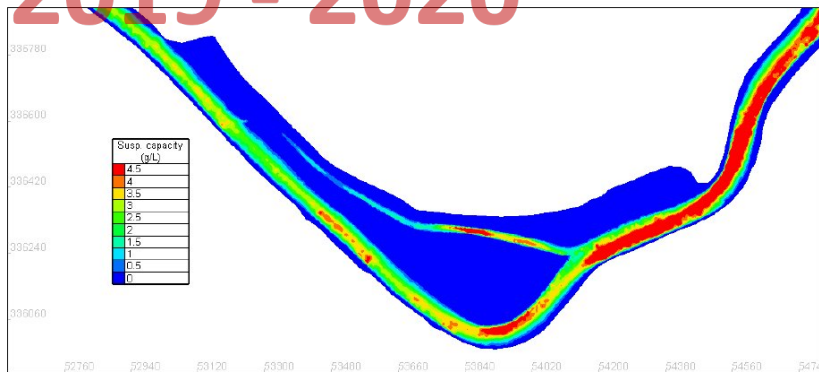
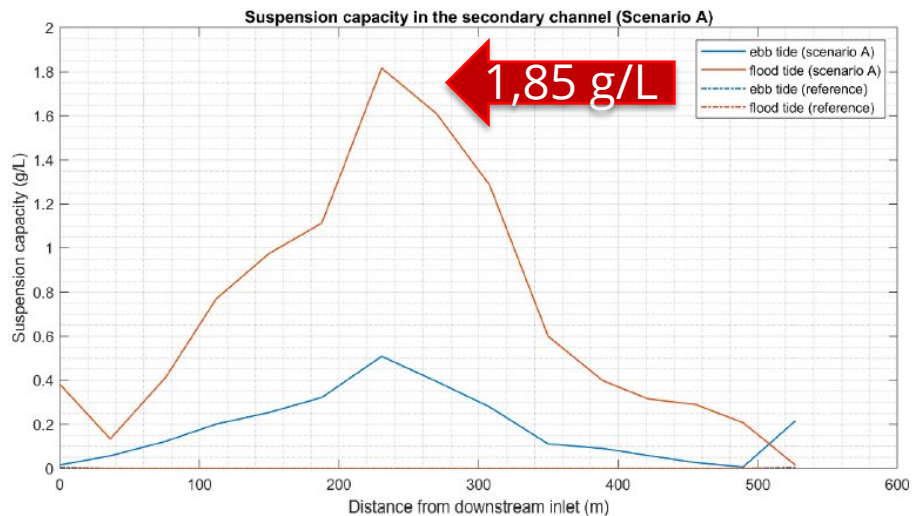
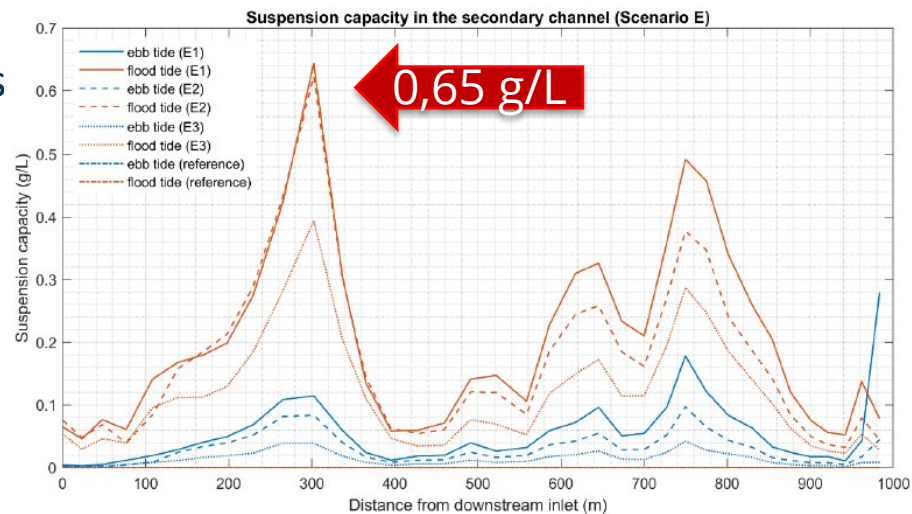
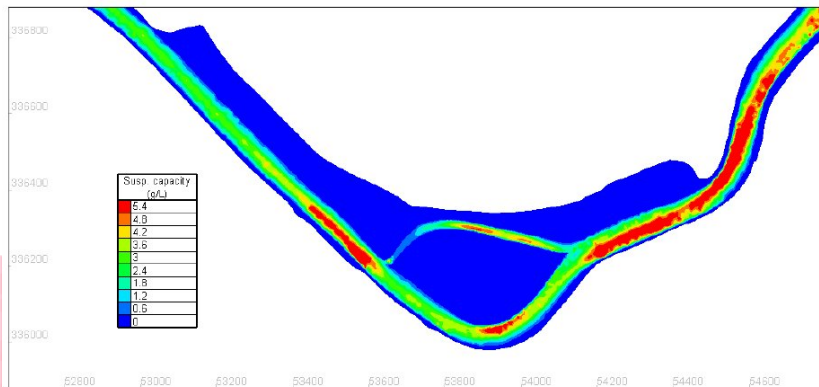


Figure 60 – The suspension capacity in Scenario A during the flood phase (04/08/2013 04:20:00, upper panel), and during the ebb phase (04/08/2013 07:20:00, lower panel)





2020 - 2021



Pilot – Wijmeers – Flood-Channel



2021

Low Tide



High Tide

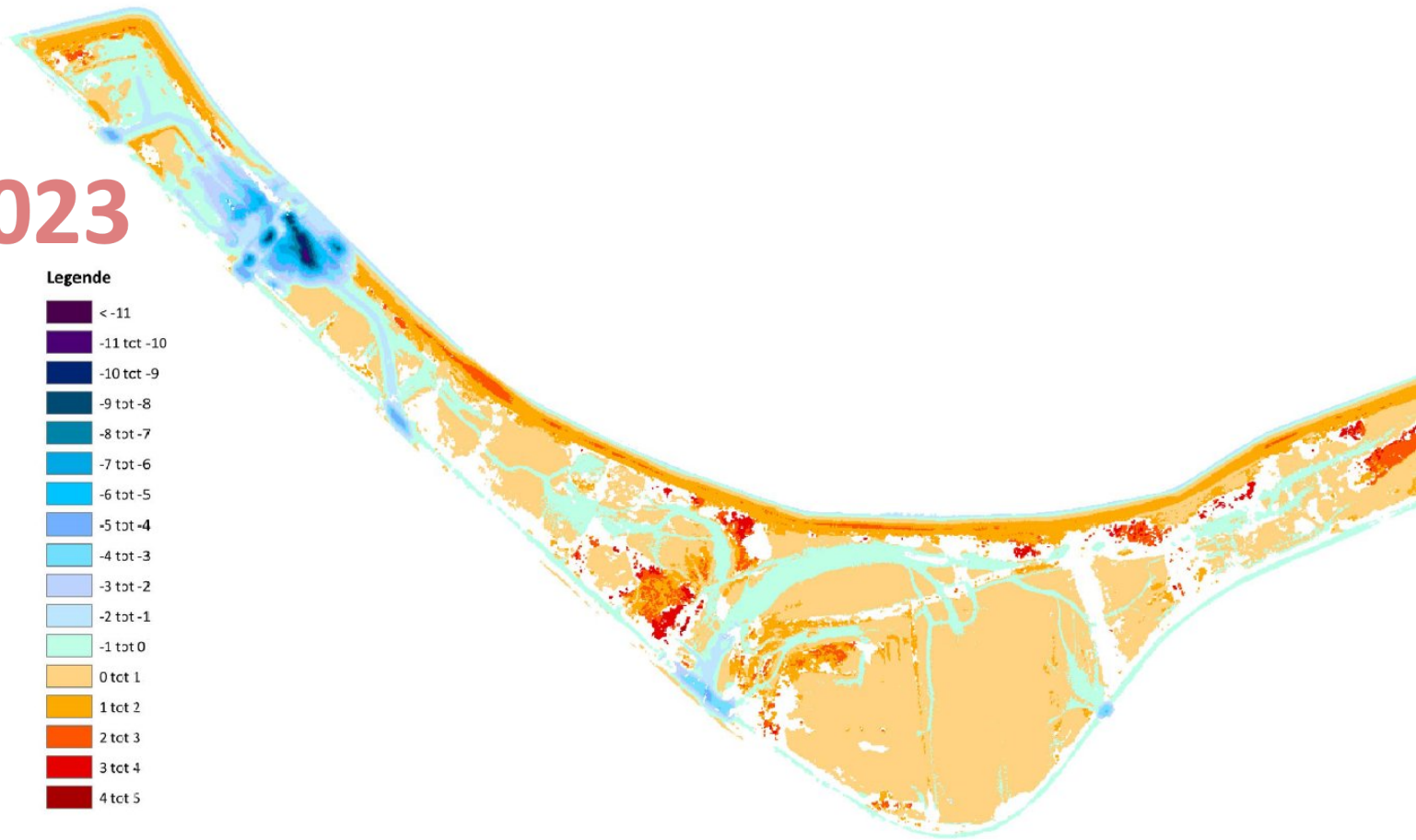
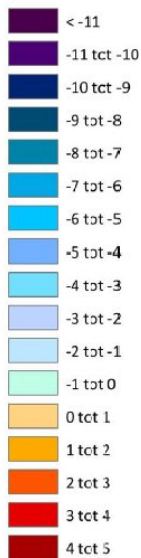


Pilot – Wijmeers – Monitoring Effects



2021 - 2023

Legende





Does your estuary face similar pressures?

Could the presented solution(s) be applied in
other estuaries?

