

# DECOM TOOLS

## Port logistics

**Interreg**  
North Sea Region  
Decom Tools  
European Regional Development Fund



**Port of Grenaa**  
*Support your business*

**GRENAA, 2023 | 17. JANUARY**



# INTRODUCTION

---

## **Henrik Carstensen**

- CEO at Port of Grenaa since December 1<sup>st</sup> 2015
- Other than that, a long career in shipping and logistics
- Connect  
</in/henrikcarstensen/>



# THE GATE TO KATTEGAT

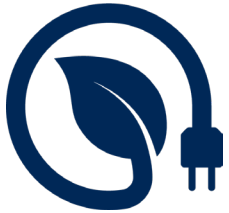
- Denmark's most central deep water port

- Access to the sea is what we live off
- Area 1,425,000 m<sup>2</sup>
- Water depth up to 11 m, prepared for 15 m
- Shipping channel 12 m deep, 100 m wide
- Turning basin 375 m
- Warehouses 52,500 m<sup>2</sup>
- Tank capacity connected to the port 100,000 m<sup>3</sup>
- Two Ro-Ro berths and three ferry berths

To be the **driving force** for growth and development in society and for the environment  
- locally, nationally and globally, through partnerships with businesses, networks and authorities.



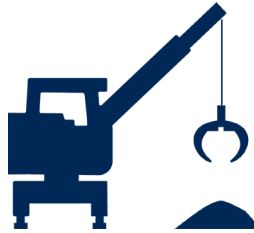
WIND



ENERGY &  
INNOVATION



STACKING &  
MAINTENANCE



BULK



FERRIES-  
& SHIPPING  
LINES



RECYCLE &  
WASTE  
MANAGEMENT



PROJECT  
CARGO



RENTALS

# CORE SEGMENTS





# INTRODUCTION

---



**Theis Gisselbæk**

- CCO at Port of Grenaa Denmark since January 1<sup>st</sup> 2017
- Other than that, a long career in wind | shipping | logistics
- Connect  
</in/theisgisselbaek/>

WIND





RECYCLE & WASTE MANAGEMENT





Industrial development  
for production and  
Power-to-X 1,500,000 m<sup>2</sup>

Up to 300,000 m<sup>2</sup>  
development and  
pre-assembly area



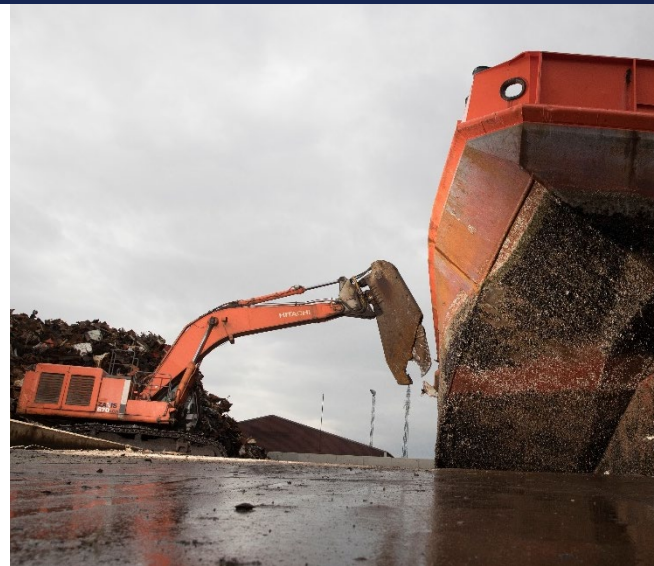
# SHIP RECYCLING

**PORT  
ARRIVAL**

**STOCKYARD**

**SCRAPPING**

**REUSE  
RESELL**





# EUROWIND

**8 V80 VESTAS  
WIND TURBINES**

**REFURBISHED AT  
PORT OF GENOA**

**SHIPPED TO NEW  
SITE IN SCOTLAND**





# STENA RECYCLING

**IRON, METAL,  
ELECTRONICS**

**FACILITY AT PORT  
OF GENOA**

**0% WASTE  
AMBITION**





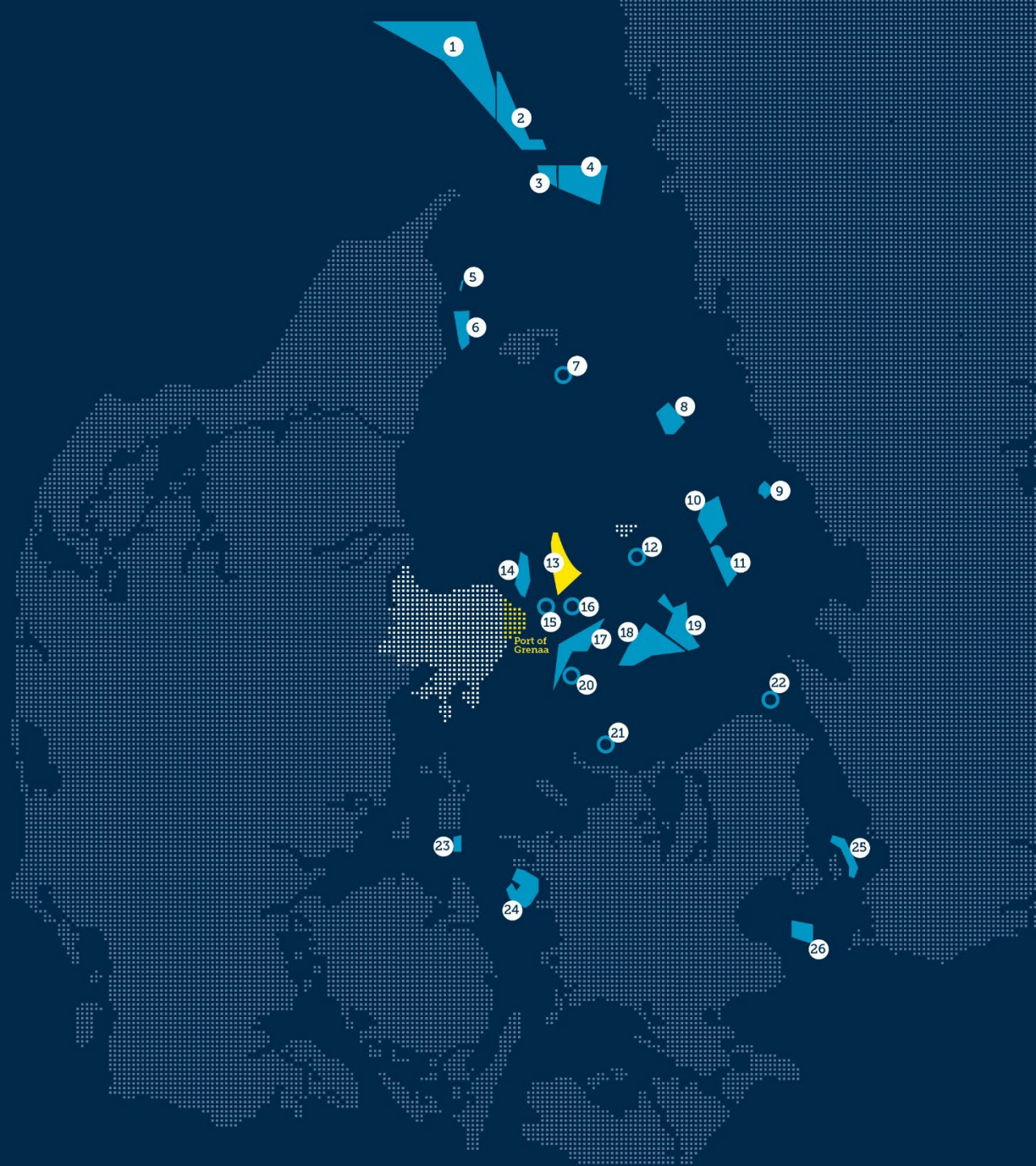
# OFFSHORE WIND PROJECTS

- |   |  |   |   |   |
|---|--|---|---|---|
| <b>1</b><br><b>Mareld</b><br>2.300 MW (77 – 230 turbines)<br><i>Floating</i><br>Hexicon AB / Aker Offshore Wind<br>*NM: 114 / KM: 211 | <b>6</b><br><b>Sæby</b><br><i>Nearshore Tender Area</i><br>200 MW<br>*NM: 59 / KM: 109                         | <b>12</b><br><b>Sønderbjerg</b><br>285 MW<br>Andel Holding A/S<br>*NM: 27 / KM: 50  | <b>17</b><br><b>Kattegat 2</b><br><i>Danish Offshore Wind Tender</i><br>495 MW<br>*NM: 8 / KM: 15                       | <b>22</b><br><b>Gilleleje Offshore Wind Farm</b><br><i>Nearshore Development</i><br>210 MW<br>Andel<br>*NM: 50 / KM: 93 |
| <b>2</b><br><b>Poseidon Nord</b><br>800 MW (61 – 94 turbines)<br><i>Floating</i><br>Zephyr Vind AB<br>*NM: 98 / KM: 181               | <b>7</b><br><b>Bocher Banke</b><br>1.100 MW<br>Copenhagen Infrastructure Partners<br>*NM: 51 / KM: 95          | <b>13</b><br><b>Anholt</b><br>399,6 MW (111 turbines)<br><i>In Operation</i><br>Ørsted A/S<br>*NM: 14 / KM: 26                            | <b>18</b><br><b>Hesselo</b><br><i>Danish Offshore Wind Tender</i><br>1.000-1.200 MW<br>*NM: 31 / KM: 52                 | <b>23</b><br><b>Paludan Flak</b><br>228 MW (19-22 turbines)<br>Wind Estate A/S<br>*NM: 45 / KM: 83                      |
| <b>3</b><br><b>Poseidon Syd</b><br>200 MW (12 - 19 turbines)<br>Zephyr Vind AB<br>*NM: 93 / KM: 172                                   | <b>8</b><br><b>Galatea-Galene</b><br>1.700 MW (68 – 101 turbines)<br>OX2<br>*NM: 60 / KM: 111                  | <b>14</b><br><b>Grenå</b><br>306-315 MW (21-51 turbines)<br>Anker Development ApS<br>*NM: 5 / KM: 9                                       | <b>19</b><br><b>Hesselo</b><br><i>Danish Offshore Wind Tender</i><br>1.005 MW<br>*NM: 31 / KM: 52                       | <b>24</b><br><b>Jammerland Bugt</b><br>240 MW (34-60 turbines)<br>European Energy<br>*NM: 52 / KM: 96                   |
| <b>4</b><br><b>Västvind</b><br>1.000 MW (50 turbines)<br>Eolus Vind AB<br>*NM: 93 / KM: 172   | <b>9</b><br><b>Kattegat Offshore</b><br>282 MW (28-47 turbines)<br>Green Investment Group<br>*NM: 55 / KM: 102 | <b>15</b><br><b>Gjerrild Bugt Offshore Wind Farm</b><br><i>Nearshore Development</i><br>300-400 MW<br>Wind Estate<br>*NM: 5 / KM: 9       | <b>20</b><br><b>Stokkebro Offshore Wind Farm</b><br><i>Nearshore Development</i><br>210 MW<br>Andel<br>*NM: 10 / KM: 19 | <b>25</b><br><b>Nordre Flint</b><br>160 MW (16-29 turbines)<br>København Kommune<br>HOFOR<br>*NM: 85 / KM: 157          |
| <b>5</b><br><b>Frederikshavn</b><br><i>Offshore Wind Demo</i><br>21,6-72 MW (5 turbines)<br>European Energy A/S<br>*NM: 65 / KM: 120  | <b>10</b><br><b>Kattegat Syd</b><br>1.200 MW (60-80 turbines)<br>Vattenfall AB<br>*NM: 45 / KM: 83             | <b>16</b><br><b>Norrdjurs Offshore Wind Farm</b><br><i>Nearshore Development</i><br>400-650 MW<br>European Energy A/S<br>*NM: 12 / KM: 22 | <b>21</b><br><b>Klintebjerg</b><br>585 MW<br>Andel Holding A/S<br>*NM: 32 / KM: 60                                      | <b>26</b><br><b>Aflandshage</b><br>250 MW (23-45 turbines)<br>København Kommune<br>HOFOR<br>*NM: 110 / KM: 204          |
|   | <b>11</b><br><b>Stora Middelgrund</b><br>850-1.200+ MW<br>Vattenfall AB<br>*NM: 58 / KM: 70                    |   |   |   |



**Port of Grenaa**  
Support your business

\* Sailing distance to Port of Grenaa  
NM: nautical miles / KM: kilometres





# FUTURE PORT EXPANSION







# SUPPORT YOUR BUSINESS

The will to succeed...