

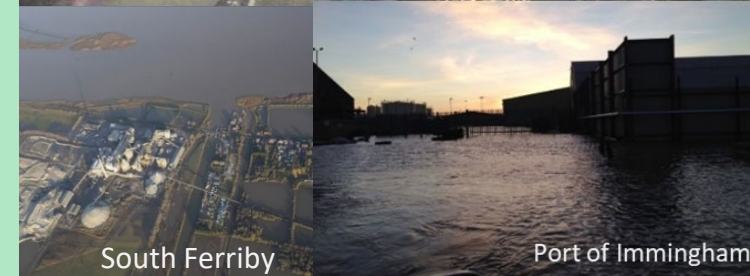
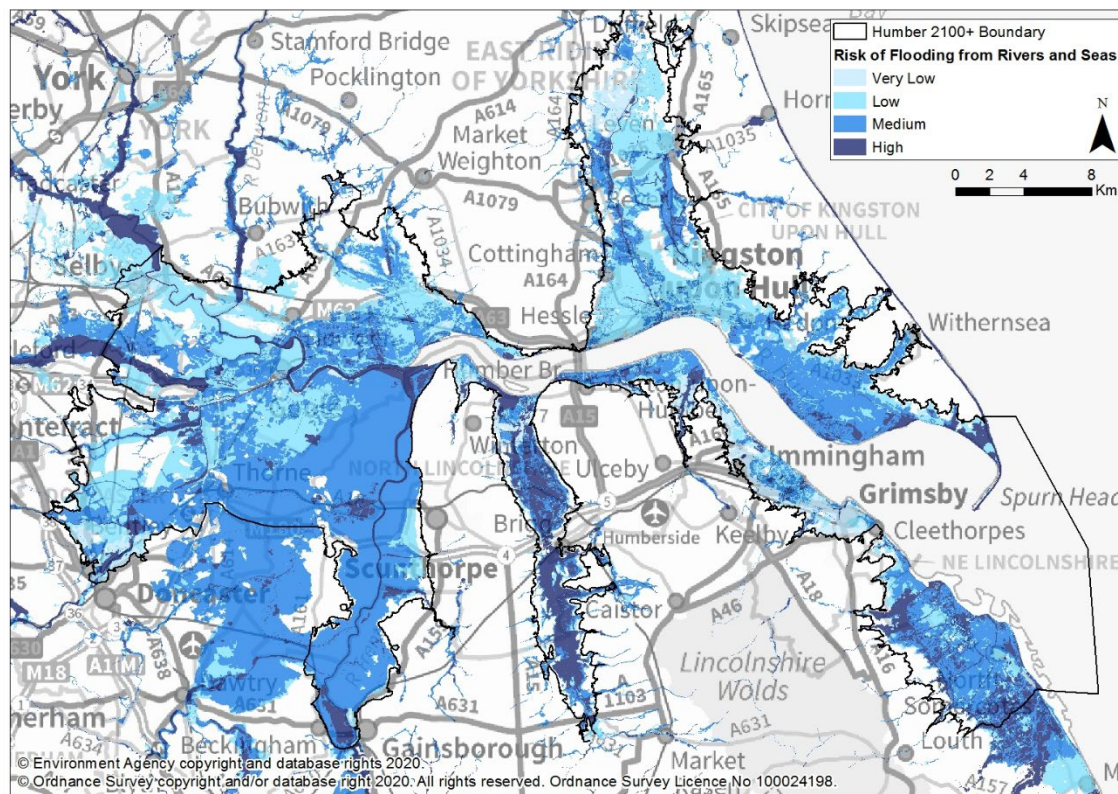
Outstrays to Skeffling Managed Realignment Scheme

March 2023

Andrew Gee – Environment Agency

Current flood risk from rivers & the sea

2013 tidal surge



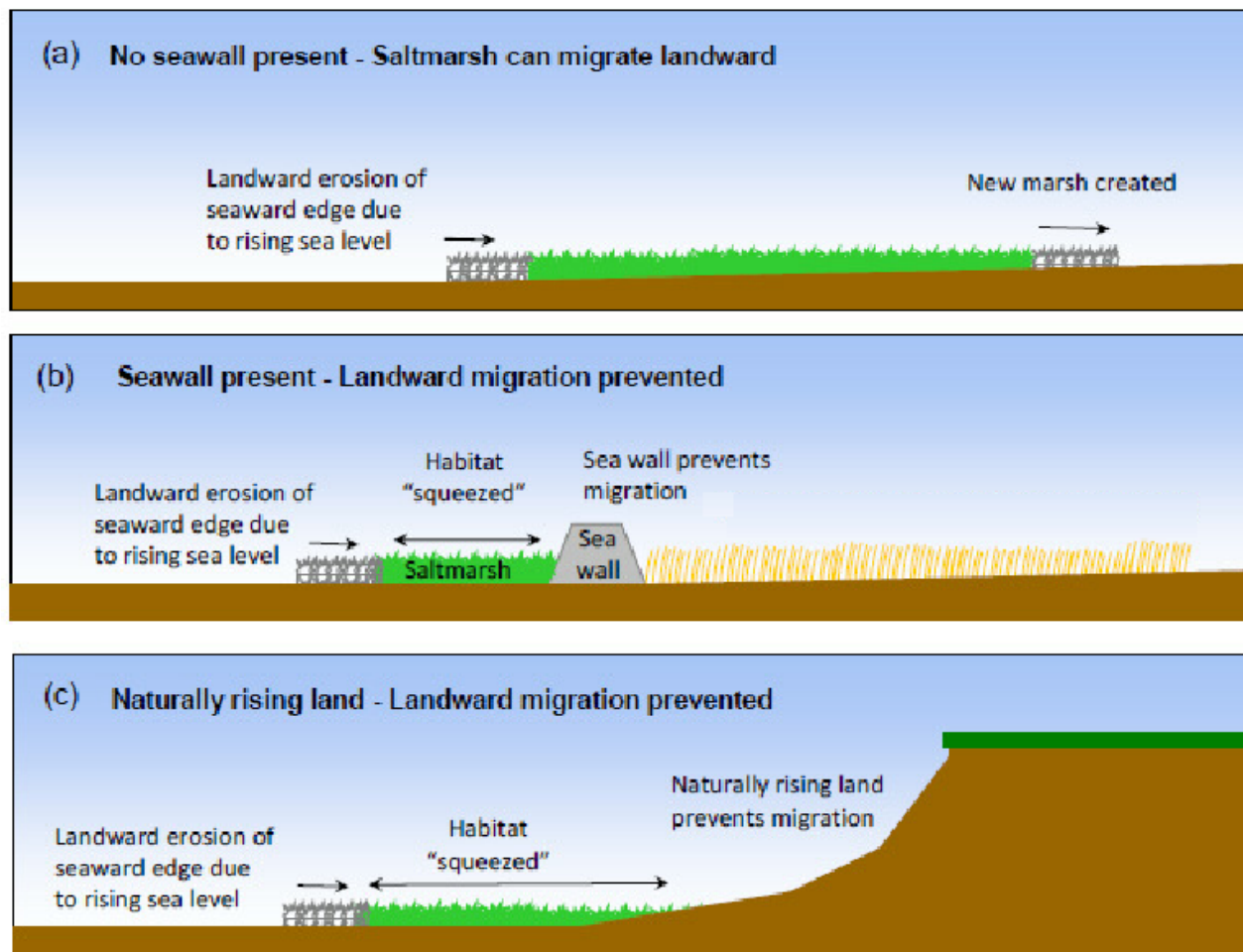
Outstrays to Skeffling Managed Realignment Scheme

- Partnership project between Environment Agency (EA) and Associated British Ports (ABP)
- Provide compensatory habitat for losses on the designated Humber Estuary – required under EU and UK law:
 - EA - predominately coastal squeeze losses (sea level rise). Need to create intertidal habitat (generally a mixture of mudflat and saltmarsh, but not in defined portions).
 - ABP - compensate for direct losses from future port expansion and development. Undefined at this stage, but generally speaking, likely to be mostly mudflat.

Outstrays to Skeffling Managed Realignment Scheme



Requirement for compensatory habitat



The scheme...



The scheme...



- 175 hectares of intertidal habitat
 - Mudflat, saltmarsh and transitional habitat
- 75 hectares of terrestrial wet grassland
- Create vital habitat on the estuary for a range of flora and fauna



Progress to date



Progress to date



Progress to date



Progress to date



Progress to date



Timescales



- 2023
 - Completion of embankments, drainage, creek network and access
- 2024
 - Tie in embankments, breach works, site demobilisation

Blue Carbon and Sustainability

- All material used in the new embankments has been won on site
 - Excavations will form the future creek networks
- Engaging with Hull University over research associated with blue carbon and managed realignment sites



Local engagement

- Drop-ins held locally with the community and local schools to share archaeological finds and works progress / plans
- Engagement with professional partners to take on board guidance and lesson learned

