

Creating ecological flooding zones at recreation areas

Kleine Nete (BE)

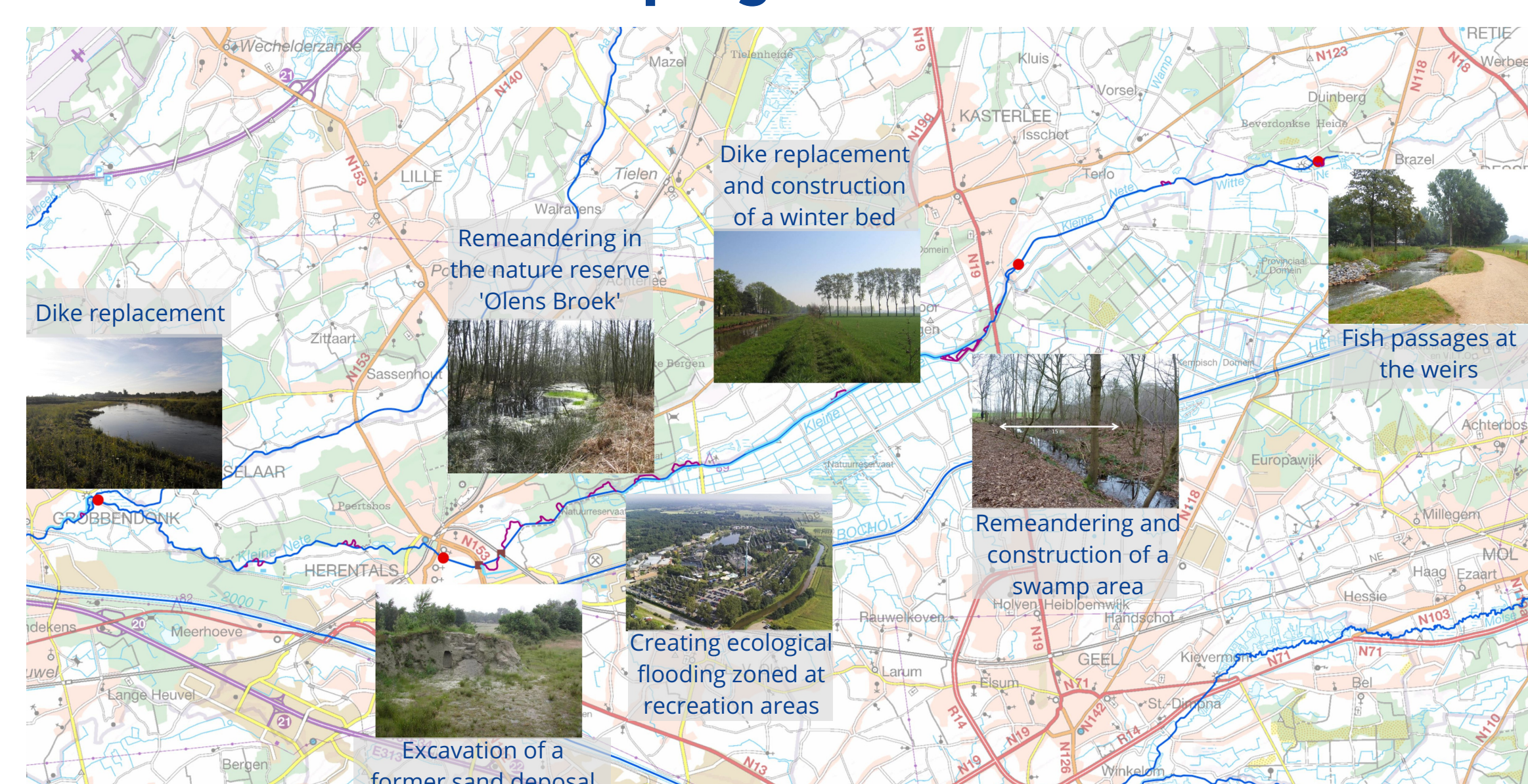
Kleine Nete river restoration

The Kleine Nete is a typical lowland river which had a free meandering course and an intense relationship between valley and river in the past. Because of former interventions, the water course is canalized, deepened and embanked, together with the construction of three important recreation areas: amusement park Bobbejaanland, camping site Korteheide and recreation site Ark van Noë.

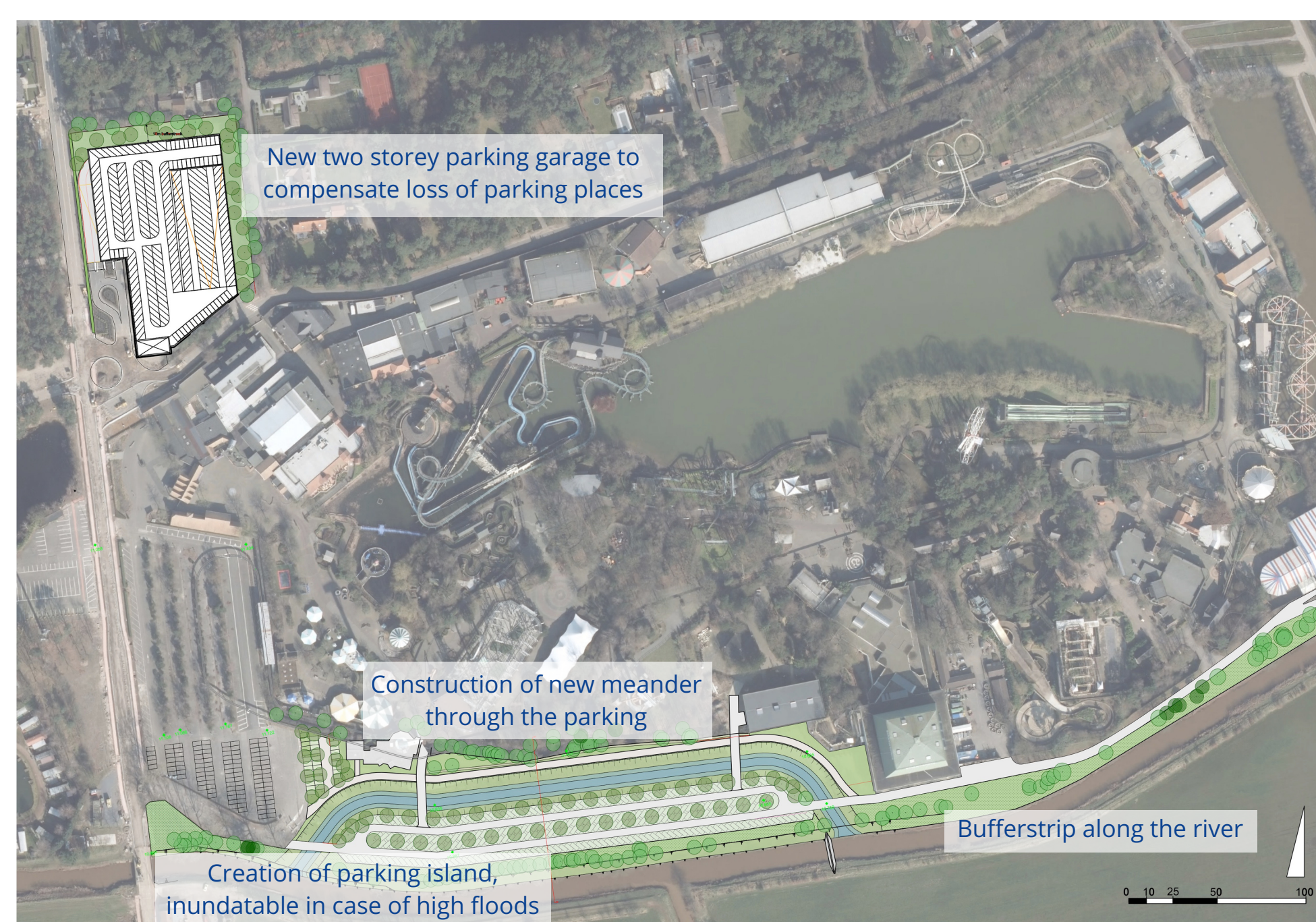
Considering climate change, increase of paving, and the canalized state of the river, peak discharges are substantially increased compared to the former natural situation. For that reason, the water manager searches for possible water storage areas also considering the restoration of ecology. For this, we should reach a win-win solution, which also offers opportunities to recreation. Therefore, the aim of the project is to come to an original, innovative concept for multifunctional use of space.



This project is part of the global river restoration program of the Kleine Nete



Amusement park 'Bobbejaanland'



Camping site 'Korte Heide'



Recreation site 'Ark van Noë'

