

BAltic and NOrth Sea Coordination and Support Action



BANOS CSA



BANOS CSA



Marine

strategy framework directive

Clean and safe shipping

Aquaculture

offshore

oil

and gas

Sustainable

blue

growth

strategy

Fisheries

Tourism and recreation

Sources for blue biotech

Common fisheries policy

Maritime spatial planning directive

Rich biological diversity

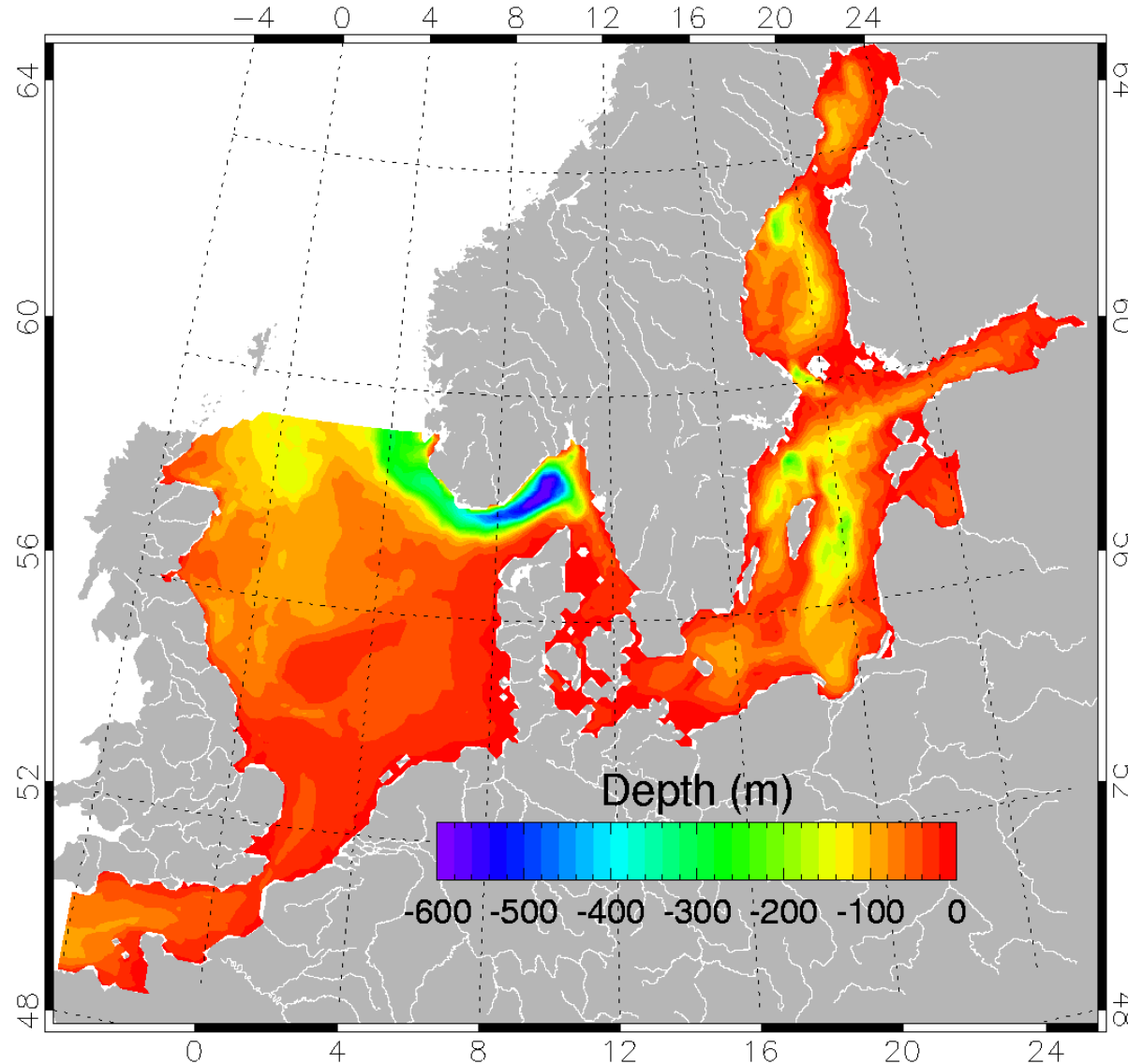
Re-

new-

able

energy

Why a 'sister seas' approach?

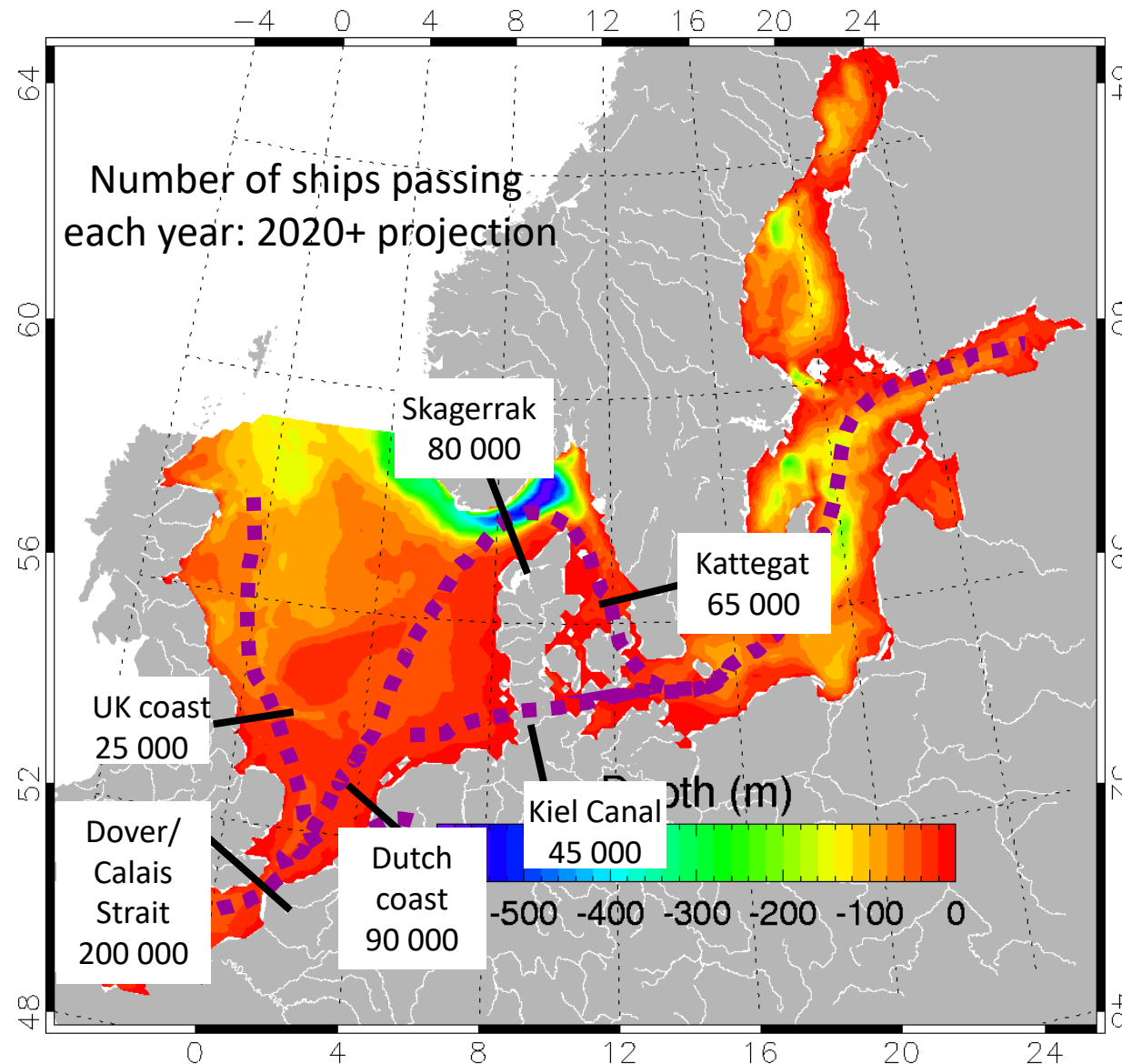


- Same climate and biogeographical zone
- Connected via water flows and biota migrations
- Several participating states border both seas
- Human-induced pressures and risks of similar character and magnitude

BANOS CSA



Why a 'sister seas' approach?

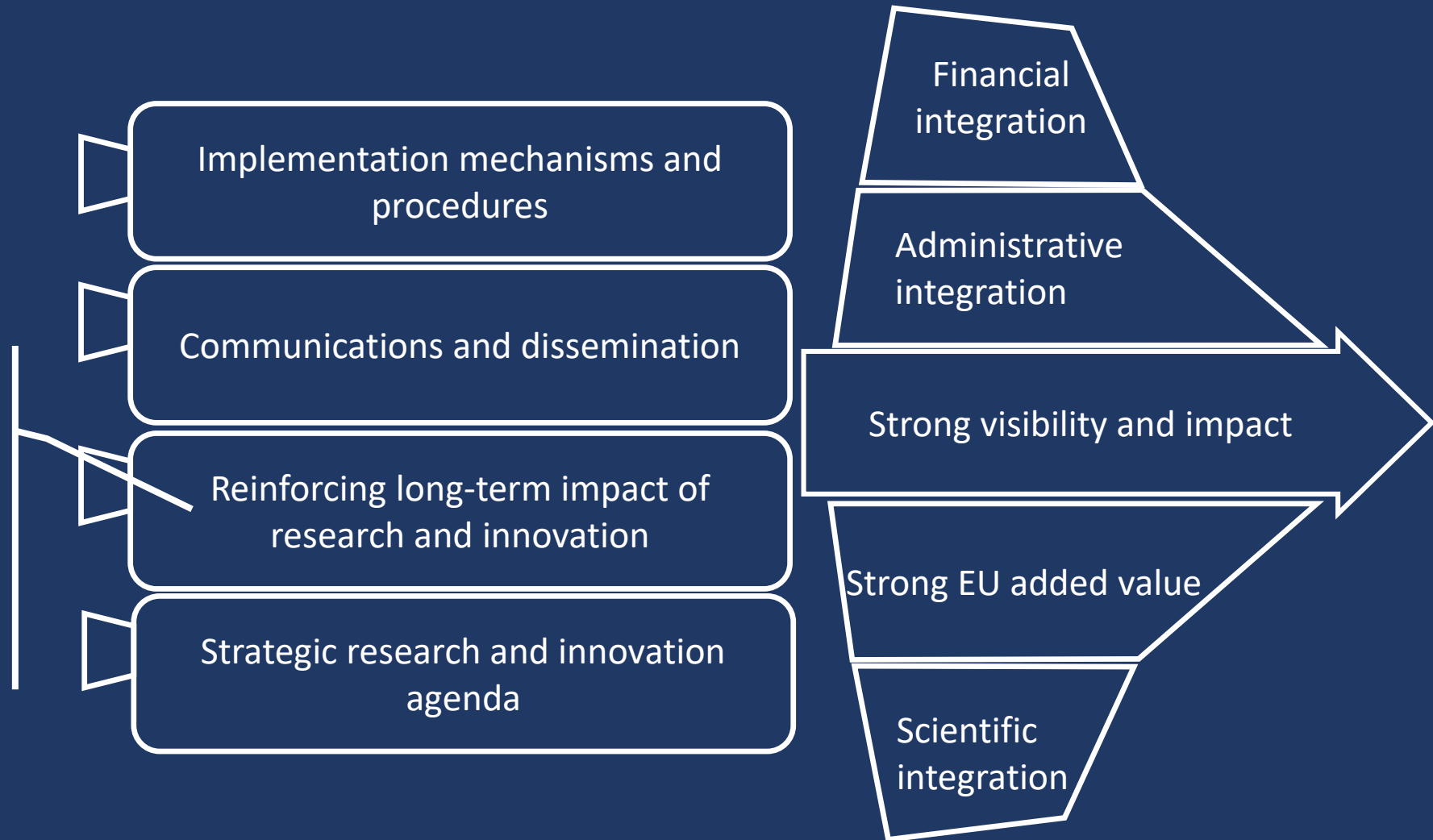


- Same climate and biogeographical zone
- Connected via water flows and biota migrations
- Several participating states border both seas
- Human-induced pressures and risks of similar character and magnitude

What we wish to achieve?



- Open data
- Open science
- Knowledge synthesis
- Knowledge transfer
- Skills transfer
- Impact monitoring
- Funding synergies
- Cooperation among European regional seas' programmes



BANOS CSA Our take-home messages:



- BANOS CSA builds the future joint R&I programme for **sustainability of ecosystem services** of the Baltic and North Seas
- We see clear benefits in a **‘sister seas’ programme**
- Get involved in designing the future programme’s **research and innovation agenda**. Check how at:
<https://www.banoscsa.org>