

# Poster BEGIN

City experiences related to policy recommendations

City: Dordrecht

## Recommendation 1: Identify the beneficiaries for making the case for BGI

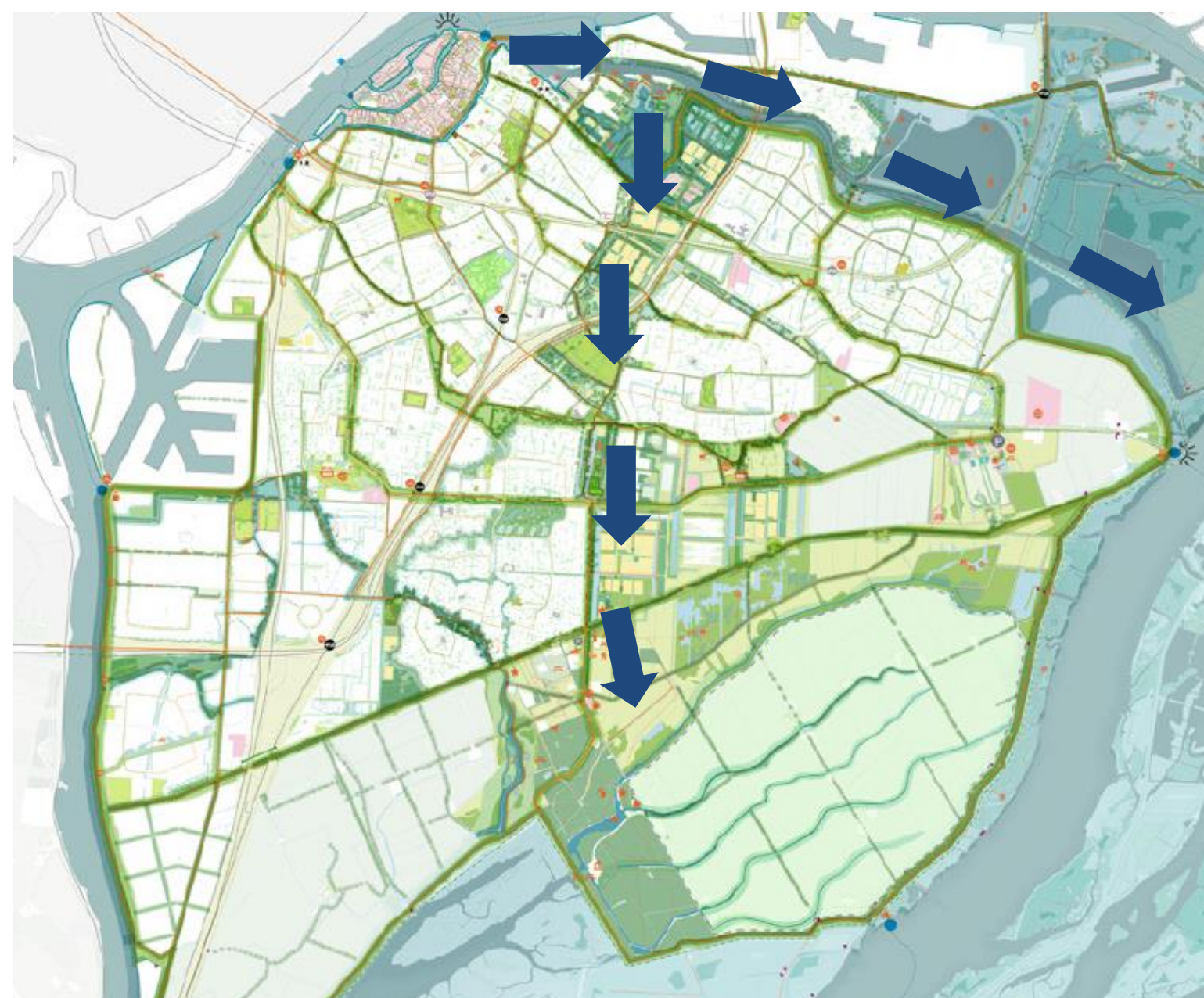
### Create a broad and integral bluegreen vision

#### Integral bluegreen vision:

- Including climate adaptation, biodiversity, health and recreation;
- Two proposed bluegreen zones;
- Actively connected to relevant stakeholders and their ambitions.

**Dordwijkzone:** a combination of sports fields and parks. By bringing these segmented area's together, we create a bluegreen zone.

**Wantijzone:** a green corridor from the city centre to the Biesbosch National Park along the Wantij river.



Bluegreen vision of Dordrecht, the Dordwijk- and the Wantijzone are indicated with arrows.



The vision for the Wantijzone



The proposed vision for the Dordwijkzone, created in two sessions with more than 100 people



# Poster BEGIN

City experiences related to policy recommendations

City: Dordrecht

## Recommendation 2: Relate the BGI to communities by demonstrating the value to them

### Branding and involve citizens in order to create a resilient city

#### Vision:

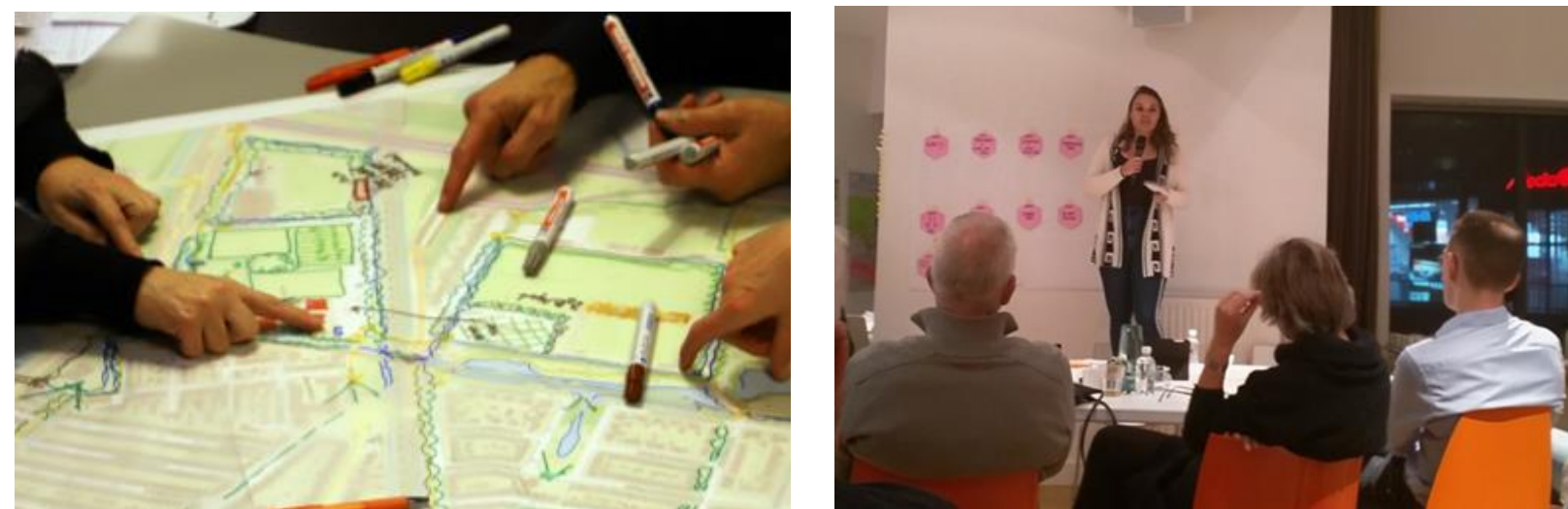
- Engage citizens and other stakeholders in the creation of the vision.

#### 1421: The Next Level:

- 600 years memorial of the Sint Elisabethflood that shaped the city;
- Showcase bluegreen solutions in an art route through the city together with local companies.

#### Engaging citizens to create green spaces:

- Campaigns to make gardens green;
- Website with advice for own home and gardens.



Sketching the plans for the Dordwijkzone together with stakeholders.



Inspiration for the 1421 art route



Our Alderman planting a tree in a stony garden



## Recommendation 3: BGI requires interdisciplinary municipal (and other) partnering

### Create an interdisciplinary team that works on a bluegreen city

#### Work in a BlueGreen team:

- Experts from city development, city maintenance, strategy, communication, citizen engagement and other teams;
- Large internal and external network: expand the work outside our own team, and mainstream the solutions and strategies to the entire municipality;
- Result: enthusiasm and support for the bluegreen zones.

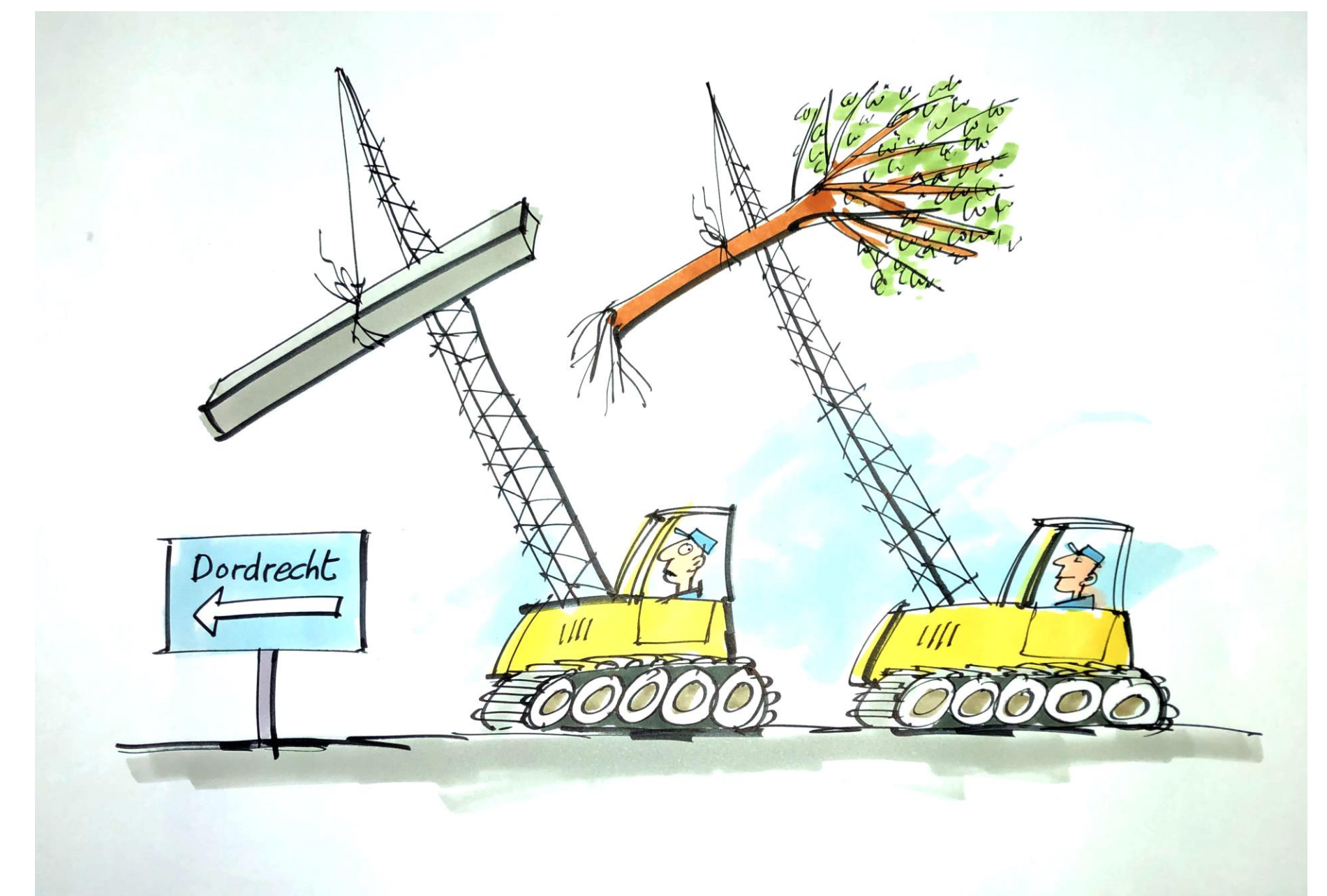
Develop the zones as **city wide zones** good for health, recreation, sport, small scale businesses, high quality green areas for nearby new development and climate adaptation. Broad political support has been received for the new proposed zones.



Combination of a flood project with a new playground and exploration area in a park



Combining green programs with social neighbourhood projects





# Poster BEGIN

City experiences related to policy recommendations

City: Dordrecht

## Recommendation 4: Develop asset management principles and processes for BGI

### Use maintenance and investments projects to create bluegreen spaces

#### Blue green programme:

- To execute the vision;
- Asset management principles and processes for our BGI, including the sewer system;
- Measures in the short term (coming 5 years) to improve and maintain their performance;
- Provide insight into whole life cost of BGI.

Based on this insight, we will develop a **proposal for a green investment fund**. Currently, greening of urban spaces is financed from the leftover budgets of grey infrastructure projects, like sewer rehabilitation.



Change maintenance programs to better foster biodiverse areas



Use new large scale investments and projects to create bluegreen routes within the city



Work with citizens to create and maintain more high quality green spaces